

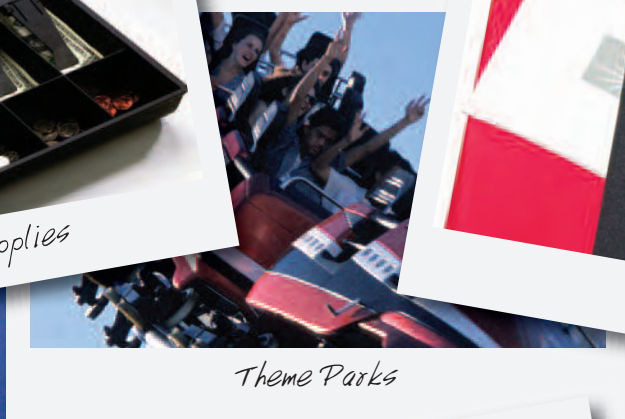
# A. RIFKIN Co.

Established 1892

Ask for our  
Current Price List  
or visit [www.arifkin.com](http://www.arifkin.com)



*Cash Handling Supplies*



*Theme Parks*



*Zipper Bags*



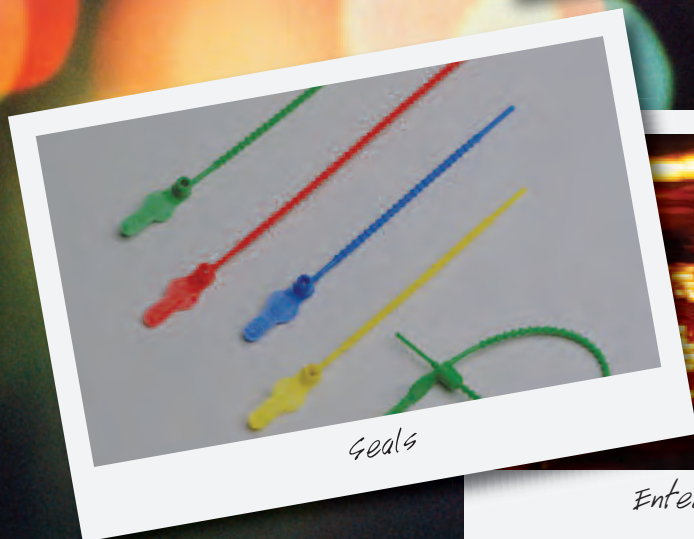
*Amusement Parks*



*Maximum Security for Cash Transport*



*Zoos & Aquariums*



*Goals*



*Tamper-Evident Keyless Security*

*Entertainment Centers*

# Parks & Amusements Catalog

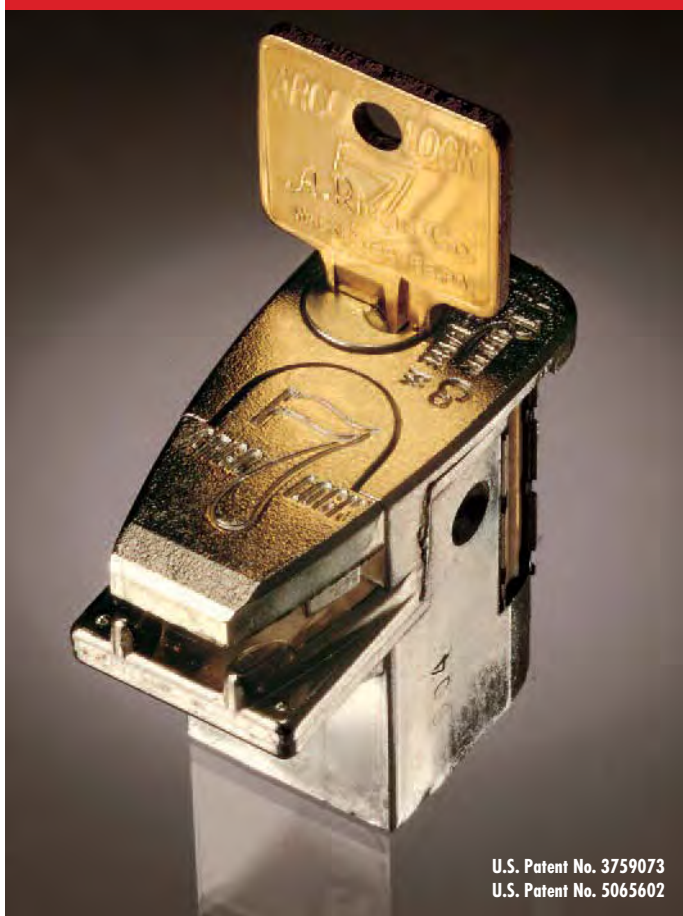
Amusement Parks • Theme Parks • Water Parks • Family Entertainment Centers • Zoos & Aquariums





# arcolock-7

## MAXIMUM SECURITY

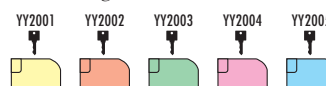


U.S. Patent No. 3759073  
U.S. Patent No. 5065602

**Rifkin's Arcolock-7®** keyed bags are the #1 selling brand of security bags for government and financial institutions. Seven decades of research and continual improvement make these storage and transport bags the most reliable on the market. The Rifkin seven-pin tumbler lock mechanism is virtually pick-proof and is compliant with federal security regulations for transporting classified documents. Additionally, we offer keying options for more confident management of your secure transport operations.

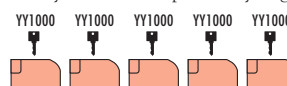
### KEYED DIFFERENTLY

Keyed differently, each bag has its own key, different from all others, with no interchanges.



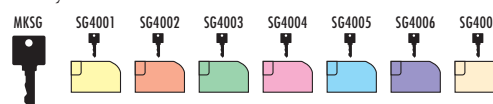
### KEYED ALIKE

When Arcolock-7's are keyed alike, a single key pattern ("bitting") allows all key holders to open every bag in the system.



### MASTER-KEYED

In master-keyed systems, each bag has its own key which is independent of other locks in the system. However, a single key opens all locks in that system.



### EMERGENCY KEY REPLACEMENT SERVICE

Replacement keys are forwarded within 48 hours in cases of emergency. Large quantity key orders may take longer. (Please specify key number which is stamped on key and base of lock.)

KEYED DIFFERENTLY LOCKS	_____	included in Sac Price.
KEYED ALIKE LOCKS	_____	included in Sac Price.
MASTER KEYED LOCKS	_____	additional per Sac.
REPLACEMENT KEYS	_____	additional per Sac.
MASTER KEYS	_____	additional per Sac..

**MADE EXCLUSIVELY FOR  
A. RIFKIN COMPANY**

ORDERS & INQUIRIES TOLL FREE 800.458.7300 | FAX 800.825.8284 | VISIT OUR WEB SITE AT [www.arifkin.com](http://www.arifkin.com)



# safety sac



## LCX ARCOLOCK-7®

The LCX Arcolock-7® is a special option available for Rifkin lock bags. It is designed for use in cash control systems where keys are not issued to individual bag users. Empty LCX Sacs are issued to cashiers from the cash control office unlocked, unzipped and with the key removed. A leather insert strip (built into each Sac) is placed around the plunger head to prevent accidental locking (see illustration). To return the filled Sac to cash control, the cashier removes the strip, closes the zipper and depresses the plunger. The bag is securely locked. Only the central cash area requires a key, and their key opens all the bags in the system. At no time do bag users need a key.

Two keys to operate all locks in the system are provided with each new LCX series. Additional keys (up to 2 per Sac) are provided at no extra charge if requested with the Sac order.

## SAFETY SAC® w/ ARCOLOCK-7®

Our high-security, fabric, lock bag is perfect for protecting cash and other valuables. Trusted by financial institutions and other cash handling businesses throughout the country to safely move currency and valuables from collection points to central counting.

Windows for ID tags or cards as shown are available at an additional charge. See page 9 for details.



## 3-DAY STOCK SAFETY SAC® w/ ARCOLOCK-7®

Safety Sacs Available from Stock for quick shipment!

Normal shipment of all Stock Bags will be 3 days from receipt of order. See page 4 for additional details about the Rifkin Stock Bag program.

All Stock Safety Sacs available in Red (07), Emerald Green (42), Nassau Blue (NB), Black (04) and Yale Blue (YB) only.

# STOCK





### SAFETY SAC WITH WEB HANDLES

Built-in protection of Rifkin Arcolock-7® and convenient webbing handles. Useful when cash collector serves multiple locations.

Black webbing handles are standard. Please specify if other handle color is desired. Window for ID tag or card is available at an additional charge. See page 9 for details.

### COMPACT COURIER

Convenient size (18" x 14") for smaller deliveries. The security of a built-in Arcolock-7®. All Arcolock-7® options available. (Details on pages 2.) 2" square bottom accommodates thicker packages. Sturdy molded plastic handles for carrying ease.

For Identification, Compact Courier may be embroidered or imprinted. (Certain minimums apply for free imprinting. See page 9 for details.)



### NON-LOCK COURIER BAG

A multi-purpose tote bag - large capacity, heavy-duty, non-locking (no zipper or other closure). Reinforced Vina-Hide base. Comfort-grip webbing handles. For identification, Non-Lock Couriers may be embroidered or imprinted. (Certain minimums apply for free imprinting. See page 9 for details.) If no identification is specified, a Twin Window (see page 9) will be supplied.

## STOCK

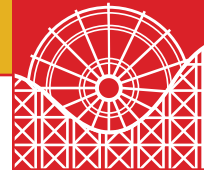
**STOCK** We maintain a limited stock of our more popular items for prompt shipment to our customers. Normal shipment Stock Bags will be 3 days from receipt of order.

**STOCK EXPRESS** For emergency situations, shipment within 24 hours from receipt of order will be arranged. When 24-hour shipment is required, please mark your order "EXPRESS" or tell our Customer Service personnel. There will be a 10% upcharge for this service. (We reserve the right to limit quantities available under this guarantee.) All Stock Bag shipments (Normal or Express) will be via UPS Ground unless otherwise specified. Stock Bags include Twin Windows. See page 9 for details.

Pricing on All Stock Bags with Arcolock-7® includes random keyed different lock. Locks keyed to a specific series at an additional cost. Master Keyed locks at an additional cost. LCX Locks at an additional cost.

ORDERS & INQUIRIES TOLL FREE 800.458.7300 | FAX 800.825.8284 | VISIT OUR WEB SITE AT [www.arifkin.com](http://www.arifkin.com)





# heavy duty courier



## HEAVY-DUTY COURIER w/ ARCOLOCK-7®

Perfect for securely transporting large volumes of documents, valuable data files, artifacts and more. Sturdy webbing handles, reinforced side panels and bottom with brass plated studs. Built-in Arcolock-7® makes this bag secure. All Arcolock-7® options available. (Details on pages 2.) For Identification, Courier Sacs may be embroidered or imprinted. (Certain minimums apply for free imprinting. See page 9 for details.) If no identification is specified, a Twin Window will be supplied.

## HEAVY DUTY COURIER SACS

with Arcolock-7® and Twin Window (see page 9)



# STOCK

**ARCOTRACK™ GPS BAG TRACKING SYSTEM**  
For transport of valuable or original materials, consider a  
**RIFKIN FIRE-SHIELD COURIER BAG or**  
**ARCOTRACK™ GPS BAG TRACKING SYSTEM.**



**ARCOTRACK™ GPS BAG TRACKING SYSTEM.**



**RIFKIN  
FIRE-SHIELD  
COURIER  
BAG**

Visit [www.arifkin.com](http://www.arifkin.com) or contact our Customer Service Department toll-free at 800-458-7300 for information about these and other products.

**ORDERS & INQUIRIES TOLL FREE 800.458.7300 | FAX 800.825.8284 | VISIT OUR WEB SITE AT [www.arifkin.com](http://www.arifkin.com)**

# keyless security



U.S. Patent Pending

## TO SECURE THE BAG

- Insert all materials to be transported into the Keyless Security™ Bag.
- Fill in date, delivery location, and seal number on provided routing card. Insert card into the clear window which is accessible only through the interior of the pouch.
- Pull the zipper completely closed. Hold chamber lid at a 45° angle, push back and down until it snaps into place.
- To lock, insert seal's twin arrowheads into the two small rectangular openings and push until they click into place.

## TO OPEN THE BAG

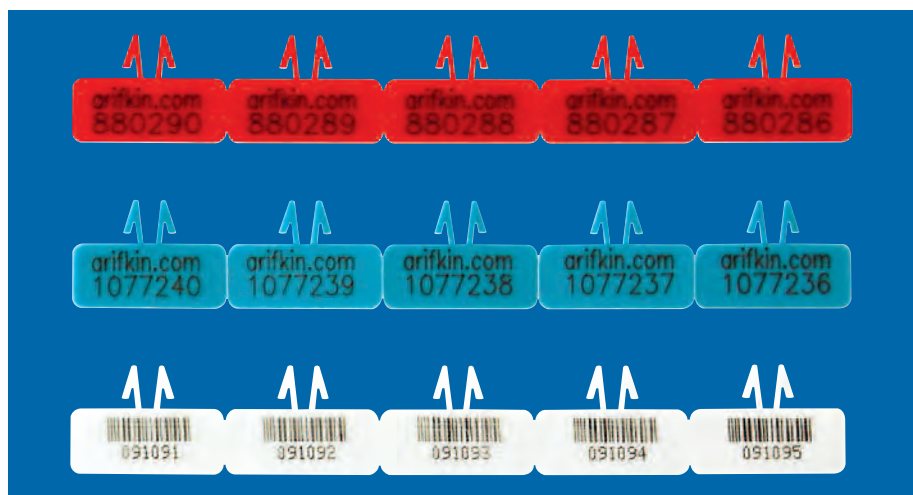
- Verify that the seal number matches the documented number on the routing card. Confirm the seal has not been broken or tampered with during transport.
- To open, utilizing the indent under the red seal, lift seal until it breaks.
- Then using the second indentation, lift up the chamber lid, unzip bag. Make sure all seal pieces are removed.
- Remove contents and reuse pouch.



U.S. Patent Pending



U.S. Patent Pending



U.S. Patent Pending

## CHAMBER SEALS

Tamper evident seals for all Rifkin bags fitted with our chamber technology. Available in white with bar coded numbers or standard red (numbered only). All seal numbers are unique and non-duplicated. (Up to 10 million quantity.)

ORDERS & INQUIRIES TOLL FREE 800.458.7300 | FAX 800.825.8284 | VISIT OUR WEB SITE AT [www.arifkin.com](http://www.arifkin.com)



### KEYLESS SECURITY™ NIGHT DEPOSIT POUCH

Use this handy 10" x 12" bag for customer deposits as an alternative to plastic. Tamper-Evident Bag is also useful for cash collection and transport as an alternative to keyed bags.

### SECUR-A-FILE™ (KEYLESS SECURITY™)

Provides keyless, tamper-evident protection of your confidential documents, store your sensitive paperwork along with non-sensitive files in any filing cabinet. Designed for legal size file cabinets. Large capacity for thick files or printouts. Heavy-duty coated suspension rods.



U.S. Patent No. 6039473



### KEYLESS SECURITY™ LIGHT DUTY COURIER BAG

14" x 18" x 4" Nylotop® 2000 zipper bag with Keyless Security™. Just zip the bag closed and secure with numbered Keyless Security™ seal for tamper-evident protection. Framed Window (FWNP006) holds 3 x 5 card that is inserted from inside bag for identification security. Webbing handles make this a convenient carrier for confidential documents or small packages. Also serves as a less "obvious" security carrier, offering protection to couriers.

### ROLLING SUPPLY BAG W/ KEYLESS SECURITY™

Pack up to 50 pounds of daily receipts, ticket stubs, record books, tokens and more, insert the Keyless Security™ seal, extend handle and wheel it wherever you need it.

#### 4-WHEEL STYLE

Four-wheel design for easy maneuvering. Allows contents to stay flat in transit. Retractable pull handle stops at a 45 degree angle - no stooping to retrieve handle. Nassau Blue Bag includes security window (FWNP006) on front of bag to hold a 3" x 5" ID card or tag.



ORDERS & INQUIRIES TOLL FREE 800.458.7300 | FAX 800.825.8284 | VISIT OUR WEB SITE AT [www.arifkin.com](http://www.arifkin.com)





# zipper & coin bags

## ZIPPER BAGS

Available in a wide variety of sizes and fabrics to meet your operational and promotional needs. Featuring the resealable HEAVY-DUTY NYLON zipper with bursting strength equal to metal and long-wearing nylon zipper tape. Zipper bags are well suited for silk-screen imprinting of your name and advertising message.

If you require that your cashiers package their personal items in a “see-through” pouch to reduce the chance of theft, our Clear Vinyl Bags are an ideal solution.



**ZIPPER TOP COIN BAGS**  
(ideal for rolled coin)



**LONG ZIPPER BAGS**  
(our most popular style!)



**SIX-COMPARTMENT COIN BAG**  
(separate pockets for each denomination and one for bills. Includes brass zipper and hood seal for simple security.)

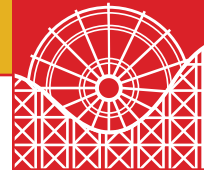
## SHIPPING BAGS

10 oz. Duck, Natural color. Sturdy seams make them ideal for packaging coins or tokens. Bags are available from stock for shipment in 3 days. Minimum order of 10 bags.

Tie tapes for stock shipping bags available additional cost per bag.







## EXPANDABLE TRANS-SAC®



## FLAT TRANS-SAC®

**TRANS-SACS®** are post office approved reusable fabric envelope for communications by mail or messenger. Many of our Amusement industry customers use these bags in their operations like they use the Zipper Bags on page 8. They choose these handy pouches to package internal paperwork, records, receipts, purchase requisitions and more. Trans-Sacs® include a window and eyelet

Standard Trans-Sacs® (both Flat and Expandable styles) are equipped with a Framed Post Office Cut-Out Window (3-5/8" x 5-3/4") in the upper right corner, as illustrated by the Burgundy bag in the photo. Other styles designed for internal or courier use may include Framed Windows in other positions. Please specify the window size and position when placing an order.

Visit our website to see other sizes and materials available or contact our Customer Service Department at 800-458-7300 to inquire about additional styles.

# CUSTOM PERSONALIZATION

## CUSTOM EMBROIDERY

Embroidered identification is FREE on all bags with an Arcolock-7®, and on the Rolling Supply Bag with Keyless Security™ (page 7). For all other non-locking bags or Keyless Security™ Bags, embroidered identification is available at an additional charge per bag. Bags made of Nylon and Leatherette may be imprinted only.

## CUSTOM SILK SCREEN IMPRINTING

### FOR BAGS WHICH INCLUDE AN ARCOLOCK-7®, OR KEYLESS SECURITY™

A one color, one side imprint is FREE on orders for 25 or more bags. For less than 25 of these bags, an imprinting charge applies. For a second color or a second location (for example, two colors one side or one color front and back) or a third color or third location (for example, three colors one side, or two colors front and one color on back), visit [www.arifkin.com](http://www.arifkin.com) and click on "Personalization" for charges that apply. If you are interested in a fourth color/location, please submit artwork and call for a quote.

### FOR NON-LOCKING BAGS

A one color, one side imprint is FREE on orders for 250 or

more bags. For less than 250 of these bags, an imprinting charge applies. For a second color or a second location (for example, two colors one side or one color front and back) or a third color or third location (for example, three colors one side, or two colors front and one color on back), visit [www.arifkin.com](http://www.arifkin.com) and click on "Personalization" for charges that apply. If you are interested in a fourth color/location, please submit artwork and call for a quote.

## WINDOWS

Framed window name plates can be used alone or together with embroidery or imprint for easy identification of bags in a complex system. Twin Window includes up to two lines of type and a bag number with bar code equivalent.

Framed windows for an ID tag or business card can be added to most bags.



**ORDERS & INQUIRIES TOLL FREE 800.458.7300 | FAX 800.825.8284 | VISIT OUR WEB SITE AT [www.arifkin.com](http://www.arifkin.com)**



### TUBULAR COIN WRAPPERS

Pop-Open, Weld-Seam. Manufactured from specially milled 60 lb. kraft paper. Colors for these wrappers conform to industry standards. (Black Indicia.) 1M per package.



### CARTRIDGE COIN WRAPPERS

Manufactured from 60 lb. kraft paper and printed in industry standards. Sized to an absolute tolerance to insure a perfect fit in coin machine stems. Fully guaranteed. Packed 1M per carton.



### CONTINUOUS PRINTED ROLLS

For automatic counting and wrapping machines. 45 lb. white kraft continuous printed rolls. Coin denominations printed in industry standards. 500 ft. or 1000 ft. rolls. Shipped with cardboard core.



### WHITE KRAFT CURRENCY BANDS

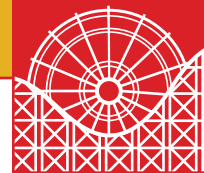
Currency bands in 50 lb. white kraft with sharp printing in bright colors. Shrink-wrapped in packs of 1000 in polyethylene film, unless chipboard boxes are preferred at \$0.50 each. Unopened bands in shrink wrap have a shelf life of approximately 18 months. SIZE 1.25 x 7.75 - WEIGHT (per M) 1 lb., 7 oz. PACKED 20,000 per case 31 lbs. per case

Minimum order 10M units.

All Styles of Coin Wrappers and Currency Bands may be combined for quantity pricing, except Continuous Printed Rolls. FREE IMPRINTING! Personalized imprinting FREE. Black only on Coin Wrappers. Other imprinting matches denomination color.

**ORDERS & INQUIRIES TOLL FREE 800.458.7300 | FAX 800.825.8284 | VISIT OUR WEB SITE AT [www.arifkin.com](http://www.arifkin.com)**





# coin trays

## PLASTIC COIN TRAYS

Removable divider makes each Plastic Coin Tray adapt for storage of either loose or rolled coin. Use the tray without the divider for rolled coin (A), or snap in the divider and the tray will accurately count and store loose coin (B). Interlocks with extra capacity tray of same denomination. Packed 20 per case. Case weighs approximately 7 lbs.

**Standard Plastic Coin Tray stores loose OR rolled coin!!**

Removable divider included with each tray.

## EXTRA CAPACITY PLASTIC COIN TRAYS

Extra Capacity Plastic Coin Trays and Plastic Coin Trays may be combined for quantity pricing.

Viewing slots at each end allow you to check tray contents quickly. Molded handles allow easy carrying. Interlock feature permits safe stacking of many trays.

- Made of lightweight, high strength A.B.S. plastic
- Color coded to conform to industry standards
- Clearly marked at both ends with capacity and denomination - check inventory at a glance

# deposit bags

## CONVENIENT READY-SHIP PACKS!

All plastic currency bags are shipped to you in dispenser pouches within each case.  
Faster & Easier Dispensing!

- **FEDERAL RESERVE ACCEPTED** – proven Federal Reserve and major bank quality!
- **TEMPER-EVIDENT CLOSURES** – multiple security features to keep your cash secure!
- **MAXIMUM PROTECTION** – custom high-strength films, secure closures and side seals!
- **CONVENIENT, EASY-TO-USE** – write-on areas, tear-off receipts, larger barcodes!

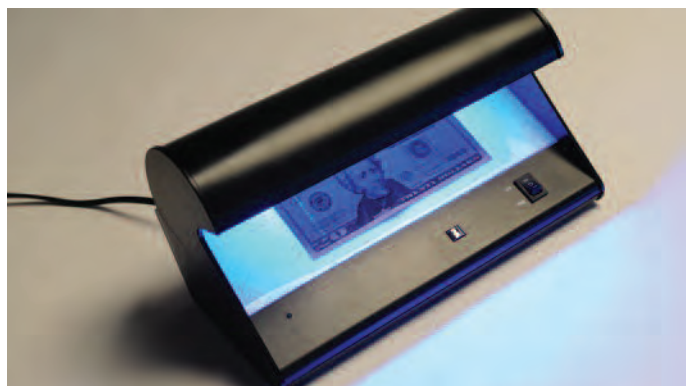


ORDERS & INQUIRIES TOLL FREE 800.458.7300 | FAX 800.825.8284 | VISIT OUR WEB SITE AT [www.arifkin.com](http://www.arifkin.com)



### **PAYMASTER BOX**

Convenient 2.25"H unit designed to fit into desk drawer.  
10-compartment coin and bill tray. Double catch lock



### **UVERIFEYE™ UV CURRENCY AUTHENTICATOR**

A cost-effective method to counterfeit detection, this ultraviolet lamp detects UV security threads and watermarks on currency, credit cards, drivers' licenses and other important documents. Also comes equipped with a magnetic head to detect magnetic ink security features.

- UV Lamp – 1 x 11W heavy-duty H-type tube
- Fluorescence lamp -1 x 11W heavy-duty H-type tube
- Power source: 110V or 220V, AC50/60Hz
- Dimensions: Length 11", Height 5.5", Width 6"



### **COIN & BILL TRAY, 10 COMPARTMENT**

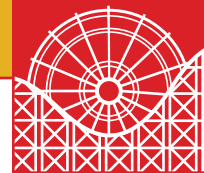
10 compartments.  
Fits any desk drawer and in Paymaster Box.



### **COIN & BILL TRAY WITH LID**

10 compartment tray with metal security lid.  
Includes wafer lock on lid and two keys.





### PULL SEALS

These easy-to-use seals adjust quickly to the position needed. Self-locking – they must be cut to be removed. Insert end of seal through side marked “Entrada.”

**S90052** Overall length is approximately 5.5”, includes random, unduplicated numbering molded in high relief.

**S90082** Overall length is approximately 8.37”, includes random, unduplicated numbering molded in high relief.

**ALL RIFKIN SECURITY SEALS ARE EASY-TO-USE AND PROVIDE A VISUAL DETERRENT TO WOULD-BE SNOOPS AND CLEAR EVIDENCE OF ANY TAMPERING.**

### ARCO ID™ TAMPER-EVIDENT LABELS

These 1” x 3” seals are easy to apply, easy to remove and leave no residue. Tamper Evident Labels can be used on cash boxes, file cabinet drawers, computer hard drives and more.



### KEYLESS SECURITY™ MINI PADLOCK KEYLESS SECURITY™ SEALS FOR MINI PADLOCK

Standard padlock keys and combinations can be stolen but there is no way to open a Rifkin Mini Padlock without leaving evidence that the contents have been breached. A broken, missing or different numbered seal indicates that your property was opened.

**ORDERS & INQUIRIES TOLL FREE 800.458.7300 | FAX 800.825.8284 | VISIT OUR WEB SITE AT [www.arifkin.com](http://www.arifkin.com)**



# color guide

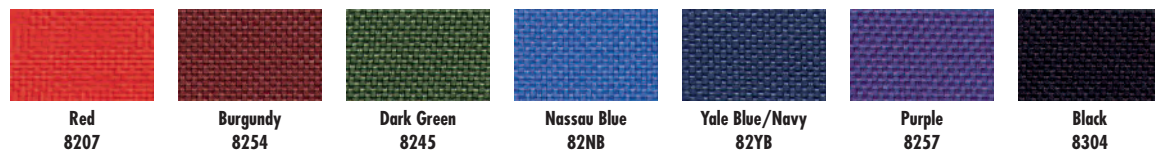
## MATERIAL COLOR GUIDE

Replace "cc" with  
Arco 600™,  
Arcoduck™ II,  
Leatherette or  
Nyloptop® 2000  
color code.

Sample product  
number B01652-  
D10-83cc would be  
B01652-D10-83YB  
(83YB represents  
Nyloptop® 2000  
Yale Blue)

### ARCO 600™

Vinyl-coated 600-denier polyester duck. Durable, water-resistant and abrasion resistant. May be imprinted or embroidered.



### ARCODUCK™ II

Outer layer of vinyl-coated 600-denier polyester duck bonded to a polyester fabric with a moisture proof inner liner. Adds to the abrasion resistance of ARCO 600™. May be imprinted or embroidered.



### LEATHERETTE

Vinyl coating applied to fabric base. Easily cleaned with soap and water. Silk screen imprinting only.



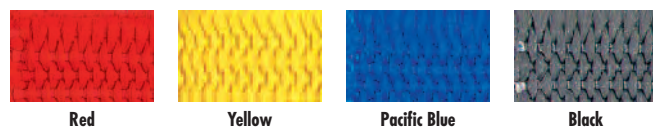
### NYLOTOP® 2000

A Rifkin fabric development. Layers of 70 denier vinyl-coated Nylon and polyester fabric bonded together with a moisture proof inner liner. Water-resistant. May be imprinted or embroidered.



### WEBBING FOR HANDLES

If no handle color is specified,  
Black will be supplied.

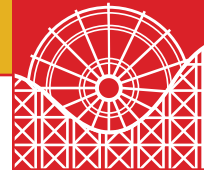


Color number indicates specific material and color combination. Note: It is not always possible to duplicate fabric shades exactly. Actual colors may vary slightly. Fabric sample swatches available upon request.

If you do not see the color or fabric which matches your system requirements, please visit our website to see additional colors available.

ORDERS & INQUIRIES TOLL FREE 800.458.7300 | FAX 800.825.8284 | VISIT OUR WEB SITE AT [www.arifkin.com](http://www.arifkin.com)





# zippers



## NYLON ZIPPER

Made of a solid coil. Advantageous in high volume operations where bag handling ease is crucial. Not recommended for high security applications.

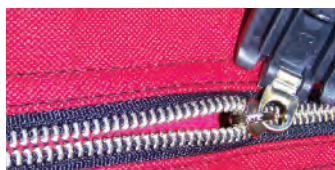


## 10mm BRASS ZIPPER

Extra strength and smooth operation. Standard on Rifkin Heavy-Duty Courier Bags and Fireshield Courier Bags.

## WHAT IS A CLOSE TOLERANCE ZIPPER?

Zipper are called close tolerance due to the number of teeth per inch and the pitch or angle of these teeth. The benefits: difficult to pop open to gain access; virtually impossible to put back together, thus showing evidence of tampering.



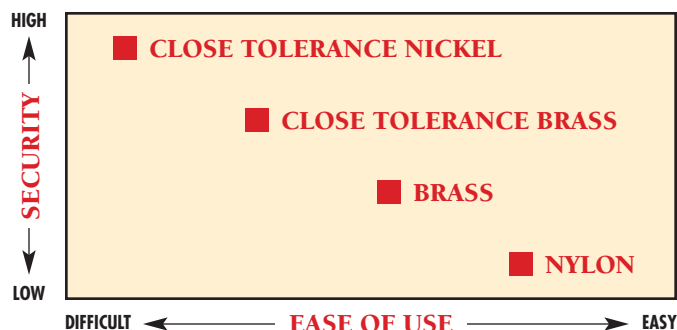
## CLOSE TOLERANCE BRASS ZIPPER

A security zipper style standard on Rifkin bags with Keyless Security™. A combination of smoother operating brass and close tolerance construction.



## CLOSE TOLERANCE NICKEL ZIPPER

Standard on Rifkin Safety Sacs®, our locking night deposit bag. The combination of hard metal (nickel) with close tolerance construction makes this the most secure zipper on the market.



## TERMS

Net 10 Days, F.O.B. Shipping Point

## POLICIES

### Rifkin Bag Products

To qualify for quantity pricing, bags must be identical in material and color and they must have identical imprinting or embroidery. Styles may not be combined for quantity pricing. For multiple colors, color assortment charges may apply. Every effort will be made to ship the exact quantity of a printed order. Standard industry practice for printed products, however, provides a manufacturing allowance of +/-3% of the quantity ordered. It is our policy to ship and invoice all finished products to the customer.

### Rifkin Stock Bags

We maintain an inventory of only those specific styles, sizes, fabrics and colors listed. **All other bags are custom-manufactured to order and may not be returned.** When Stock Bags are returned, a 15% re-stocking charge applies.

### Rifkin Non-Bag Products

You must be completely satisfied with the items purchased, or we will exchange the item, refund the purchase price or credit your account, as you wish. This policy applies provided the merchandise is returned within 30 days of receipt in re-sale condition. Any merchandise made to special order, and those items printed or engraved to your specifications may not be returned or exchanged.

### Return Policy

If you need to return an item, return authorization is required. Please contact our representative in your area or our Customer Service Department at 800-458-7300 for assistance. Return merchandise should be shipped to: A. Rifkin Co. 1400 Sans Souci Parkway Wilkes-Barre, PA 18706 or to the location specified by our Customer Service representative when you receive your Return Authorization. All prices and specifications in this catalog are subject to change without notice. All orders are subject to the approval of Rifkin and are not binding until accepted by Rifkin. Rifkin reserves the right to refuse any order at any time. All orders are subject to availability of materials and component parts and Rifkin shall not be liable for inability to ship any order(s) due to material or parts shortages.

### New Accounts

We will approve and process immediately all orders from customers with a satisfactory credit rating from D&B. We require payment by credit card or check prior to processing orders from all other customers. If you are not listed in D&B or wish to establish an open account with our company, please contact Customer Service at 800-458-7300 to request a credit application.

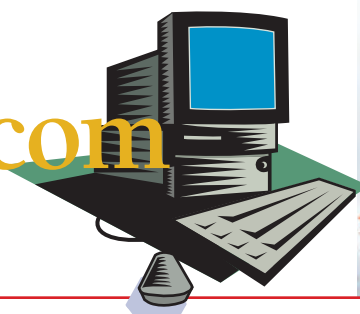
### Our Guarantee

We are dedicated to providing you, our customers, with high quality products. We guarantee that the materials and workmanship used for each of our products will be of excellent quality and that they will serve to the satisfaction of our customers.

# index

Arco ID™ Labels	13	Mini Padlock, Keyless Security™	13
Arcolock-7®	2	Night Deposit Pouch, Keyless Security™	7
Bill Straps	10	Non-Lock Courier Bag	4
Coin & Bill Trays	12	Paymaster Box	12
Coin Bags	8	Plastic Coin Trays	11
Coin Shipping Bags, Duck	8	Plastic Currency Deposit Bags	11
Coin Trays, Plastic	11	Pull Seals	13
Coin Wrappers	10	Rifkin Safety Sac®	3
Compact Courier	4	Rolling Supply Bag, Keyless Security™	7
Counterfeit Detection System	12	Safety Sac with Web Handles	4
Courier Sac, Locking, Heavy Duty	5	Seals	13
Currency Bands	10	Seals, Keyless Security™	6
Currency Deposit Bags, Plastic	11	Shipping Bags, Duck	8
Custom Personalization	9	Six-Compartment Coin Bag	8
Heavy-Duty Courier Sac, Locking	5	Stock Bags	4
Imprinting, Silk-Screen	9	Stock Heavy Duty Courier Sacs	5
Keying Systems	2	Stock Rifkin Safety Sacs®	3
Keyless Security™ Night Deposit Pouch	7	Stock Shipping Bags	8
Keyless Security™ Light Duty Courier	7	Strap Bags	11
Keyless Security™ Mini Padlock	13	Tamper-Evident Labels	13
Keyless Security™ Rolling Supply Bag	7	Trans-Sacs®	9
Keyless Security™ Seals	6	Twin Windows	9
Keys	2	Windows	9
LCX Arcolock-7®	3	Zipper Bags	8
Light Duty Courier Bag, Keyless Security™	7	Zipper Top Coin Bags	8
Lock Options for Stock Bags	4		
Locking Deposit Bags	3	Material/Color Guide	14
Locking Heavy-Duty Courier Sac	5	Terms & Policies	15
Long Zipper Bags	8	Zipper Guide	15

[www.arifkin.com](http://www.arifkin.com)



ORDERS & INQUIRIES TOLL FREE 800.458.7300 | FAX 800.825.8284 | VISIT OUR WEB SITE AT [www.arifkin.com](http://www.arifkin.com)

**A. RIFKIN Co.**  
Established 1892

A. Rifkin Co.  
1400 Sans Souci Parkway  
P.O. Box 878  
Wilkes-Barre, PA 18703

PRESORTED  
STANDARD  
U.S. POSTAGE  
**PAID**  
WILKES-BARRE, PA  
PERMIT NO. 16