

A. RIFKIN Co.

Established 1892

Ask for our
Current Price List
or visit www.arifkin.com

You can count on **RIFKIN** products!



YOUR ONE STOP SHOPPING FOR CASH AND DOCUMENT HANDLING NEEDS.

HEAVY-DUTY COURIER with ARCOLOCK-7®



SAFETY SAC® with ARCOLOCK-7®



KEYLESS SECURITY™ NIGHT DEPOSIT POUCH



ZIPPER BAGS



TRANS-SACS®



PULL SEALS



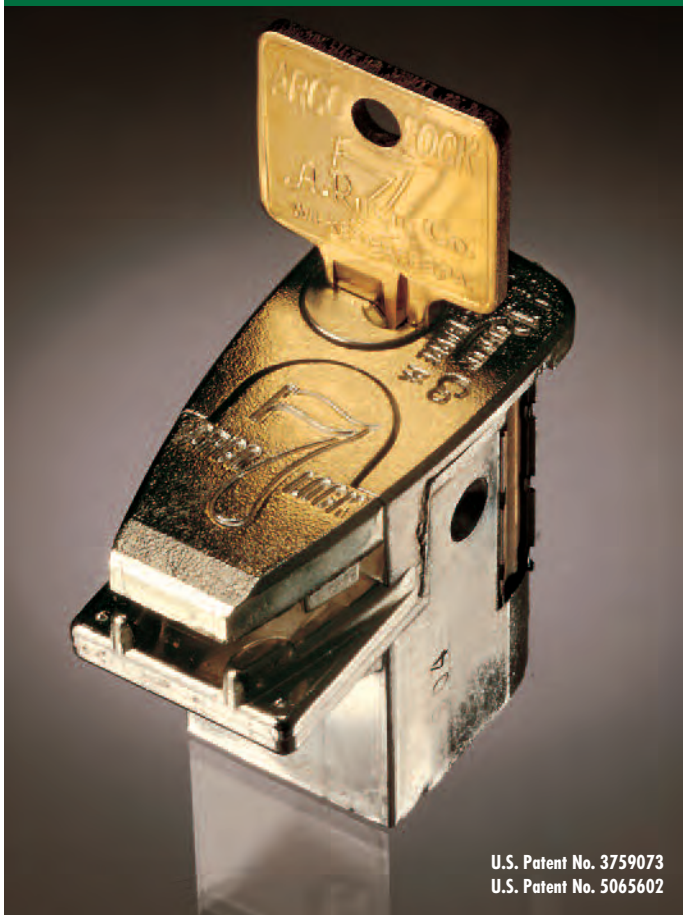
COIN WRAPPERS

STOCK-UP AND SAVE! GUARANTEED VALUE!
 ORDERS & INQUIRIES TOLL FREE 800.458.7300 | FAX 800.825.8284 | VISIT OUR WEB SITE AT www.arifkin.com
 PRICES EFFECTIVE 02.15.09

Grocery & Convenience Stores Catalog

arcolock-7

MAXIMUM SECURITY

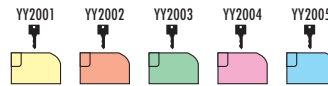


U.S. Patent No. 3759073
U.S. Patent No. 5065602

Rifkin's Arcolock-7® keyed bags are the #1 selling brand of security bags for government and financial institutions. Seven decades of research and continual improvement make these storage and transport bags the most reliable on the market. The Rifkin seven-pin tumbler lock mechanism is virtually pick-proof and is compliant with federal security regulations for transporting classified documents. Additionally, we offer keying options for more confident management of your secure transport operations.

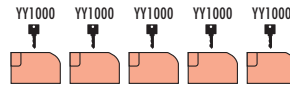
KEYED DIFFERENTLY

Keyed differently, each bag has its own key, different from all others, with no interchanges.



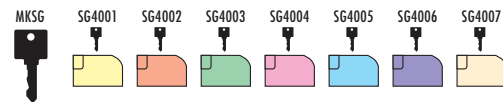
KEYED ALIKE

When Arcolock-7's are keyed alike, a single key pattern ("bitting") allows all key holders to open every bag in the system.



MASTER-KEYED

In master-keyed systems, each bag has its own key which is independent of other locks in the system. However, a single key opens all locks in that system.



EMERGENCY KEY REPLACEMENT SERVICE

Replacement keys are forwarded within 48 hours in cases of emergency. Large quantity key orders may take longer. (Please specify key number which is stamped on key and base of lock.) Replacement keys are \$ 5.78 each.

KEYED DIFFERENTLY LOCKS	_____	included in Sac Price.
KEYED ALIKE LOCKS	_____	included in Sac Price.
MASTER KEYED LOCKS	_____	additional per Sac.
REPLACEMENT KEYS	_____	additional per Sac.
MASTER KEYS	_____	additional per Sac..

**MADE EXCLUSIVELY FOR
A. RIFKIN COMPANY**



safety sac



SAFETY SAC® w/ ARCOLOCK-7®

Our high-security, fabric, lock bag is perfect for protecting cash and other valuables. Trusted by financial institutions and other cash handling businesses throughout the country to safely move currency and valuables from collection points to central counting.

Windows for ID tags or cards as shown are available at an additional charge. See page 13 for details.

DATA SAC with Arcolock-7®

To transport computer printouts and confidential data. Arcolock-7® security. Top and side zipper for easy access. Expandable top and bottom. Side stiffeners keep bag flat and protect its contents.





heavy duty courier

HEAVY-DUTY COURIER w/ ARCOLOCK-7®

Perfect for securely transporting large volume of papers, currency or other valuables. Sturdy webbing handles, reinforced side panels and bottom with brass plated studs. Built-in Arcolock-7® makes this bag secure.

All Arcolock-7® options available. (Details on pages 2.)

For Identification, Courier Sacs may be embroidered or imprinted.

(Certain minimums apply for free imprinting. See page 9 for details.)

If no identification is specified, a Twin Window will be supplied.



STOCK

We maintain a limited stock of our more popular items for prompt shipment to our customers. Normal shipment of Stock Bags will be 3 days from receipt of order. We have shown several of our stock bags in this catalog. For additional styles and further details, please visit our website at www.arifkin.com. Pricing on All Stock Bags with Arcolock-7® includes random keyed different lock. See website for information about additional charges for other keying systems.

HEAVY DUTY COURIER SACS w/ ARCOLOCK-7®

with
Twin Window (see page 13)



SAFETY SAC® w/ ARCOLOCK-7®

Safety Sacs Available from Stock for quick shipment!



All STOCK Safety Sacs available in Red (07), Emerald Green (42), Nassau Blue (NB), Black (04) and Yale Blue (YB) only.



mail bags

POST OFFICE-TYPE MAIL BAGS

Sturdy, Large Capacity Bags for Packages available in Nylon and ArcoDuck™ II.

Ideal for consolidating and transporting mail, including packaged books and loan materials.

Bags can be imprinted for store or branch identification. (Certain minimums apply for free imprinting. See page 13 for details.)

For individualized customer information, Framed Window Name Plates can be added at an additional charge. (See page 13.) Price includes nylon sash cord and locking metal rope clamp. A Plastic Locking Rope Clamp can be substituted for the Locking Metal Rope Clamp on request at no additional charge.



NON-LOCKING LIGHT DUTY COURIER

A roomy 18" x 22" x 4" Cordura® Plus satchel with a 4" expansion at the bottom of the bag and a Cordura® Plus skirt for added wear protection. Webbing handles and heavy duty nylon zipper closure. Two black eyelets near end of zipper allow users to loop a seal through for simple security. Framed window to accommodate identification card available at additional charge.

Not recommended for coin transport.



keyless security



U.S. Patent Pending

TO SECURE THE BAG

- Insert all materials to be transported into the Keyless Security™ Bag.
- Fill in date, delivery location, and seal number on provided routing card. Insert card into the clear window which is accessible only through the interior of the pouch.
- Pull the zipper completely closed. Hold chamber lid at a 45° angle, push back and down until it snaps into place.
- To lock, insert seal's twin arrowheads into the two small rectangular openings and push until they click into place.

RIFKIN KEYLESS SECURITY™ bags use uniquely numbered, single-use seals and a patented zipper chamber to provide documented evidence that the contents of the bag remain secure during storage and transport. All bags equipped with Rifkin's Keyless Security™ option provide clear evidence if the bag contents have been compromised. The very presence of the Keyless Security™ chamber keeps most would-be “snoops” looking for an easier target.



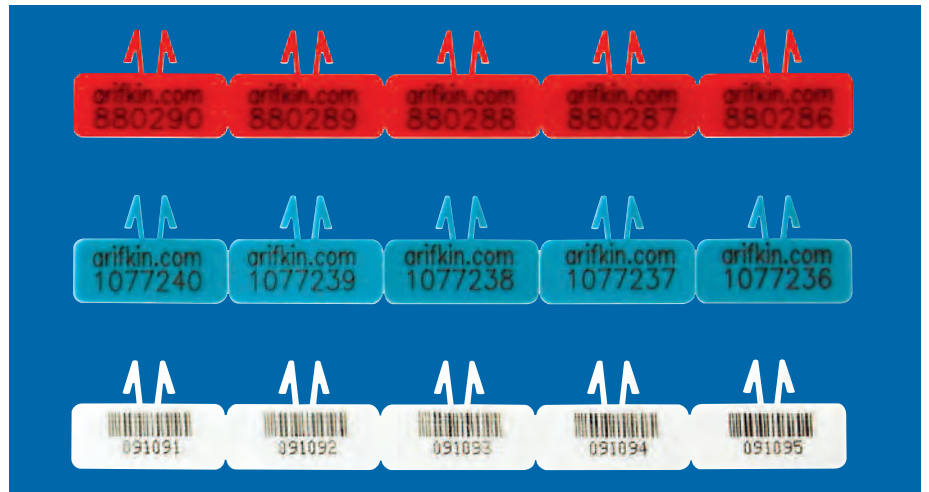
U.S. Patent Pending

TO OPEN THE BAG

- Verify that the seal number matches the documented number on the routing card. Confirm the seal has not been broken or tampered with during transport.
- To open, utilizing the indent under the red seal, lift seal until it breaks.
- Then using the second indentation, lift up the chamber lid, unzip bag. Make sure all seal pieces are removed.
- Remove contents and reuse pouch.



U.S. Patent Pending



U.S. Patent Pending

CHAMBER SEALS

Tamper evident seals for all Rifkin bags fitted with our chamber technology. Available in white with bar coded numbers or standard red (numbered only). All seal numbers are unique and non-duplicated. (Up to 10 million quantity.)

ORDERS & INQUIRIES TOLL FREE 800.458.7300 | FAX 800.825.8284 | VISIT OUR WEB SITE AT www.arifkin.com



KEYLESS SECURITY™ NIGHT DEPOSIT POUCH

Use this handy 10" x 12" bag for customer deposits as an alternative to plastic. Tamper-Evident Bag is also useful for cash collection and transport as an alternative to keyed bags.

KEYLESS SECURITY™ INTEROFFICE COURIER POUCH

Designed to replace the familiar manila inter-office envelope with the added benefit of Keyless Security™. Accommodates letter-size documents. Route documents securely throughout your business...desk to desk, office to office, building to building. Close-tolerance metal zippers provide tamper-evident protection. Supplied with double-sided routing card. Special Feature: Routing cards (11" x 4.25") are inserted from inside bag for added security. Identification on card cannot be tampered with while sealed bag is in transit.

This bag is available from stock in Nassau Blue (B05870-C1S-82NB).
Minimum order 5 bags.



KEYLESS SECURITY™ LIGHT DUTY COURIER BAG

14" x 18" x 4" zipper bag with Keyless Security™. Just zip the bag closed and secure with numbered Keyless Security™ seal for tamper-evident protection. Framed Window (FWNP006) holds 3 x 5 card that is inserted from inside bag for identification security. Webbing handles make this a convenient carrier for confidential documents or small packages. Also serves as a less "obvious" security carrier, offering protection to couriers.

ROLLING SUPPLY BAG W/ KEYLESS SECURITY™

Pack up to 50 pounds of daily receipts, ticket stubs, record books, tokens and more, insert the Keyless Security™ seal, extend handle and wheel it wherever you need it.

4-WHEEL STYLE

Four-wheel design for easy maneuvering. Allows contents to stay flat in transit. Retractable pull handle stops at a 45 degree angle - no stooping to retrieve handle. Nassau Blue Bag includes security window (FWNP006) on front of bag to hold a 3" x 5" ID card or tag.



ORDERS & INQUIRIES TOLL FREE 800.458.7300 | FAX 800.825.8284 | VISIT OUR WEB SITE AT www.arifkin.com

zipper & coin bags



ZIPPER BAGS

Available in a wide variety of sizes and fabrics to meet your operational and promotional needs. Featuring the resealable HEAVY-DUTY NYLON ZIPPER with bursting strength equal to metal and long-wearing nylon zipper tape.

Zipper bags are well suited for silk-screen imprinting of your name and advertising message.

If you require that your cashiers package their personal items in a "see-through" pouch to reduce the chance of theft, our Clear Vinyl Bags are an ideal solution. to see additional sizes.



SIX-COMPARTMENT COIN BAG

Snap-top (B01810) and zipper styles (B08980) feature six labeled compartments - a separate pocket for each coin denomination, plus one for bills. Ideal for emptying cash register drawers. Zipper style is made with a brass zipper and hood seal for simple security.

STOCK

LONG ZIPPER BAGS





FLAT TRANS-SAC®



EXPANDABLE TRANS-SAC®

Trans-Sacs are post office approved reusable fabric envelope for communications by mail or messenger. You can use these handy mailers to package correspondence, payroll data or other paperwork.

Standard Trans-Sacs® (both Flat and Expandable styles) are equipped with a Framed Post Office Cut-Out Window (3-5/8" x 5-3/4") in the upper right corner, as illustrated by the Gold bag in the photo. Other styles designed for internal or courier use may include Framed Windows in other positions. Please specify the window size and position when placing an order.

Visit our website at www.arifkin.com to see other sizes and materials as well as to see additional Trans-Sacs available for shipment in 3 days from stock.

trans-sacs

STOCK

TRANS-SACS



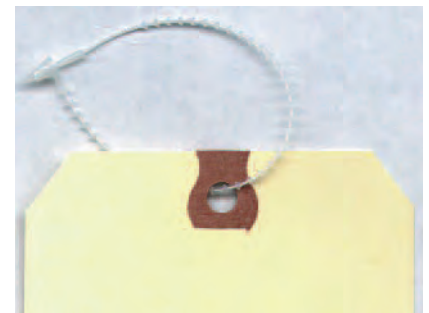
accessories

SECUR-A-TIES

5" long. Looped through Trans-Sac eyelet and sealed. Used to attach address label to Sac.
(Minimum order 1,000.)
Approx. Ship. Wt. 3 lbs. per 5M

SHIPPING TAGS, Size #8

Fit into Framed P.O. Cut Out Window (3-5/8" x 5-3/4") for addressing Trans-Sacs.
(Minimum order 200 tags.)
Approx. Ship. Wt. 3 lbs. per 200 tags



ORDERS & INQUIRIES TOLL FREE 800.458.7300 | FAX 800.825.8284 | VISIT OUR WEB SITE AT www.arifkin.com



PULL SEALS

These easy-to-use seals adjust quickly to the position needed. Self-locking – they must be cut to be removed. Insert end of seal through side marked “Entrada.”

S90052 Overall length is approximately 5.5”, includes random, unduplicated numbering molded in high relief.

S90082 Overall length is approximately 8.37”, includes random, unduplicated numbering molded in high relief.



FAST SEALS

Thin, flexible polypropylene “tail” and strong metal clip locking mechanism in “head”. Easy-to-use for applications with small openings. Laser etched serial numbers on each seal. Seal can be removed without a tool.

Available in 8” or 10” lengths with your choice of White with Blue Cap or White with Red Cap.

KEYLESS SECURITY™ MINI PADLOCK KEYLESS SECURITY™ SEALS FOR MINI PADLOCK

Standard padlock keys and combinations can be stolen but there is no way to open a Rifkin Mini Padlock without leaving evidence that the contents have been breached. A broken, missing or different numbered seal indicates that your property was opened.



U.S. Patent Pending

ORDERS & INQUIRIES TOLL FREE 800.458.7300 | FAX 800.825.8284 | VISIT OUR WEB SITE AT www.arifkin.com



deposit bags

CONVENIENT READY-SHIP PACKS!

All plastic currency bags are shipped to you in dispenser pouches within each case.
Faster & Easier Dispensing!

- **FEDERAL RESERVE ACCEPTED** – proven Federal Reserve and major bank quality!
- **TEMPER-EVIDENT CLOSURES** – multiple security features to keep your cash secure!
- **MAXIMUM PROTECTION** – custom high-strength films, secure closures and side seals!
- **CONVENIENT, EASY-TO-USE** – write-on areas, tear-off receipts, larger barcodes!



DEPOSITORY SAFE



This Depository Safe is designed for protection against robbery as well as internal theft. It allows quick deposits and secure storage for cash without access inside the safe. It also protects money collections where immediate deposits are required.

Standard Features:

- Front loading mail box style Deposit Door
- Anti-Fish Baffle prevents theft through the deposit door
- Battery operated Electronic Lock protected by an internal spring loaded relocking device
- Four anchor holes provided to secure your safe to the floor
- 1/2" thick solid steel door
- Heavy duty dead bar prevents door removal during a forced entry attempt

Exterior Dimensions: 20-1/4" H x 14" W x 14" D

Approximate Weight: 90 lbs.

White Glove Delivery included.

ORDERS & INQUIRIES TOLL FREE 800.458.7300 | FAX 800.825.8284 | VISIT OUR WEB SITE AT www.arifkin.com



TUBULAR COIN WRAPPERS

Pop-Open, Weld-Seam. Manufactured from specially milled 60 lb. kraft paper. Colors for these wrappers conform to industry standards. (Black Indicia.) 1M per package.



CARTRIDGE COIN WRAPPERS

Manufactured from 60 lb. kraft paper and printed in industry standards. Sized to an absolute tolerance to insure a perfect fit in coin machine stems. Fully guaranteed. Packed 1M per carton.



QUIK-STIK CURRENCY BANDS

Made from specially milled 50 lb. brown kraft. Quik Stik adhesive eliminates messy moisteners. Just press the latexed ends together and it sticks. Shrink-wrapped in packs of 1000 in polyethylene film, unless chipboard boxes are preferred at \$0.50 each. Unopened bands in shrink wrap have a shelf life of approximately 18 months.

SIZE: 1.25 x 7.75 - WEIGHT: (per M) 1 lb., 4 oz.

PACKED: 20,000 per case, 27 lbs. per case



WHITE KRAFT CURRENCY BANDS

Currency bands in 50 lb. white kraft with sharp printing in bright colors. Shrink-wrapped in packs of 1000 in polyethylene film, unless chipboard boxes are preferred at \$0.50 each.

Unopened bands in shrink wrap have a shelf life of approximately 18 months.

SIZE 1.25 x 7.75 - WEIGHT (per M) 1 lb., 7 oz.

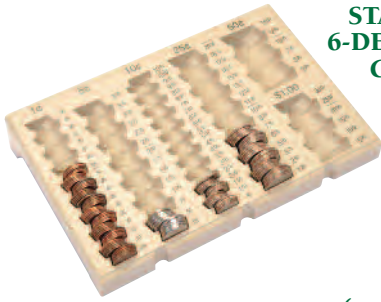
PACKED 20,000 per case 31 lbs. per case

Minimum order 10M units.

All Styles of Coin Wrappers and Currency Bands shown here may be combined for quantity pricing.

FREE IMPRINTING! Personalized imprinting FREE. Black only on Coin Wrappers. Other imprinting matches denomination color.

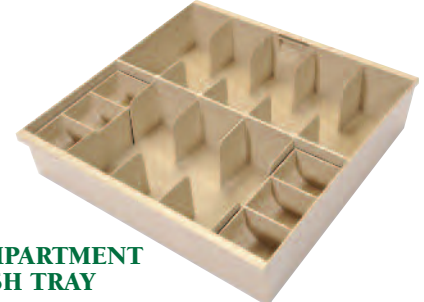
ORDERS & INQUIRIES TOLL FREE 800.458.7300 | FAX 800.825.8284 | VISIT OUR WEB SITE AT www.arifkin.com



**STAND-ALONE
6-DENOMINATION
COIN TRAY**



**7-COMPARTMENT
CURRENCY TRAY
(optional coin tray fits inside)**



**10-COMPARTMENT
CASH TRAY**

LIGHTWEIGHT PLASTIC CURRENCY TRAYS

Cash trays fit any standard cash drawer. The 10-compartment tray has 10-currency compartments and the coin scoops will fit into any of the compartments. The 7-compartment tray has six-currency compartments and the seventh larger compartment can accommodate our Coin Dollar Tray.

Outside dimensions: 3.375"H x 14.875"W x 14.875"D. Color: Putty.



CUSTOM PERSONALIZATION

CUSTOM EMBROIDERY

Embroidered identification is FREE on all bags with an Arcolock-7®, and on the Rolling Supply Bag with Keyless Security™ (page 7). For all other non-locking bags or Keyless Security™ Bags, embroidered identification is available at an additional charge per bag. Bags made of Nylon and Leatherette may be imprinted only.

CUSTOM SILK SCREEN IMPRINTING FOR BAGS WHICH INCLUDE AN ARCOLOCK-7®, OR KEYLESS SECURITY™

A one color, one side imprint is FREE on orders for 25 or more bags. For less than 25 of these bags, an imprinting charge applies. For a second color or a second location (for example, two colors one side or one color front and back) or a third color or third location (for example, three colors one side, or two colors front and one color on back), visit www.arifkin.com and click on "Personalization" for charges that apply. If you are interested in a fourth color/location, please submit artwork and call for a quote.

FOR NON-LOCKING BAGS

A one color, one side imprint is FREE on orders for 250 or

more bags. For less than 250 of these bags, an imprinting charge applies. For a second color or a second location (for example, two colors one side or one color front and back) or a third color or third location (for example, three colors one side, or two colors front and one color on back), visit www.arifkin.com and click on "Personalization" for charges that apply. If you are interested in a fourth color/location, please submit artwork and call for a quote.

WINDOWS

Framed window name plates can be used alone or together with embroidery or imprint for easy identification of bags in a complex system. Twin Window includes up to two lines of type and a bag number with bar code equivalent.

Framed windows for an ID tag or business card can be added to most bags.



ORDERS & INQUIRIES TOLL FREE 800.458.7300 | FAX 800.825.8284 | VISIT OUR WEB SITE AT www.arifkin.com



color guide

ARCO 600™

Vinyl-coated 600-denier polyester duck. Durable, water-resistant and abrasion resistant. May be imprinted or embroidered.



ARCODUCK™ II

Outer layer of vinyl-coated 600-denier polyester duck bonded to a polyester fabric with a moisture proof inner liner. Adds to the abrasion resistance of ARCO 600™. May be imprinted or embroidered.



LEATHERETTE

Vinyl coating applied to fabric base. Easily cleaned with soap and water. Silk screen imprinting only.



NYLOTOP® 2000

A Rifkin fabric development. Layers of 70 denier vinyl-coated Nylon and polyester fabric bonded together with a moisture proof inner liner. Water-resistant. May be imprinted or embroidered.



NYLON

200-denier fabric with water-resistant urethane coating. Silk-screen imprinting only.



CORDURA® PLUS

The look and feel of cotton duck with the superior performance of nylon. High abrasion resistance. Urethane coating. May be imprinted or embroidered.



Color number indicates specific material and color combination.

Note: It is not always possible to duplicate fabric shades exactly. Actual colors may vary slightly. Fabric sample swatches available upon request. If you do not see the color or fabric which matches your system requirements, please visit our website to see additional colors available.

ORDERS & INQUIRIES TOLL FREE 800.458.7300 | FAX 800.825.8284 | VISIT OUR WEB SITE AT www.arifkin.com



zippers



NYLON ZIPPER

Made of a solid coil. Advantageous in high volume operations where bag handling ease is crucial. Not recommended for high security applications.

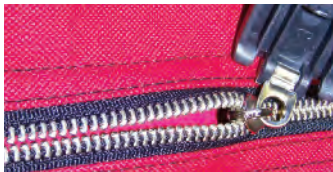


10mm BRASS ZIPPER

Extra strength and smooth operation. Standard on Rifkin Heavy-Duty Courier Bags and Fireshield Courier Bags.

WHAT IS A CLOSE TOLERANCE ZIPPER?

Zippers are called close tolerance due to the number of teeth per inch and the pitch or angle of these teeth. The benefits: difficult to pop open to gain access; virtually impossible to put back together, thus showing evidence of tampering.



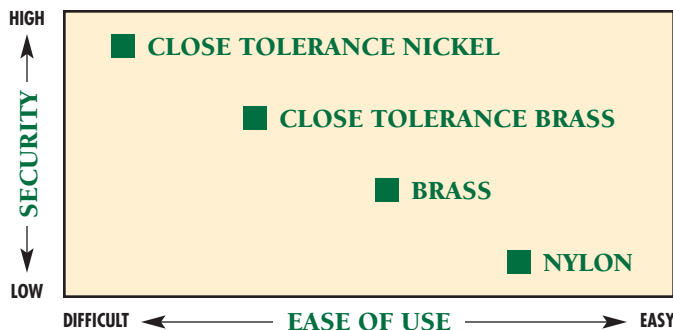
CLOSE TOLERANCE BRASS ZIPPER

A security zipper style standard on Rifkin bags with Keyless Security™. A combination of smoother operating brass and close tolerance construction.



CLOSE TOLERANCE NICKEL ZIPPER

Standard on Rifkin Safety Sacs®, our locking night deposit bag. The combination of hard metal (nickel) with close tolerance construction makes this the most secure zipper on the market.



See www.arifkin.com/security for further details about our bag closures.

TERMS

Net 10 Days, F.O.B. Shipping Point

POLICIES

Rifkin Bag Products

To qualify for quantity pricing, bags must be identical in material and color and they must have identical imprinting or embroidery. Styles may not be combined for quantity pricing. For multiple colors, color assortment charges may apply. Every effort will be made to ship the exact quantity of a printed order. Standard industry practice for printed products, however, provides a manufacturing allowance of +/-3% of the quantity ordered. It is our policy to ship and invoice all finished products to the customer.

Rifkin Stock Bags

We maintain an inventory of only those specific styles, sizes, fabrics and colors listed **All other bags are custom-manufactured to order and may not be returned.** When Stock Bags are returned, a 15% re-stocking charge applies.

Rifkin Non-Bag Products

You must be completely satisfied with the items purchased, or we will exchange the item, refund the purchase price or credit your account, as you wish. This policy applies provided the merchandise is returned within 30 days of receipt in re-sale condition. Any merchandise made to special order, and those items printed or engraved to your specifications may not be returned or exchanged.

Return Policy

If you need to return an item, return authorization is required. Please contact our representative in your area or our Customer Service Department at 800-458-7300 for assistance. Return merchandise should be shipped to: A. Rifkin Co. 1400 Sans Souci Parkway Wilkes-Barre, PA 18706 or to the location specified by our Customer Service representative when you receive your Return Authorization. All prices and specifications in this catalog are subject to change without notice. All orders are subject to the approval of Rifkin and are not binding until accepted by Rifkin. Rifkin reserves the right to refuse any order at any time. All orders are subject to availability of materials and component parts and Rifkin shall not be liable for inability to ship any order(s) due to material or parts shortages.

New Accounts

We will approve and process immediately all orders from customers with a satisfactory credit rating from D&B. We require payment by credit card or check prior to processing orders from all other customers. If you are not listed in D&B or wish to establish an open account with our company, please contact Customer Service at 800-458-7300 to request a credit application.

Our Guarantee

We are dedicated to providing you, our customers, with high quality products. We guarantee that the materials and workmanship used for each of our products will be of excellent quality and that they will serve to the satisfaction of our customers.

ORDERS & INQUIRIES TOLL FREE 800.458.7300 | FAX 800.825.8284 | VISIT OUR WEB SITE AT www.arifkin.com

index

Arcolock-7®	2	Locking Deposit Bags	3
Bill Straps	12	Locking Heavy-Duty Courier Sac	4
Cash Trays, Lightweight	13	Long Zipper Bags	8
Coin Bag, Plastic, Tamper-Evident	11	Mail Bags	5
Coin Bags	8	Mailing Pouches, Fabric	9
Coin Wrappers	12	Mini Padlock, Keyless Security™	10
Courier Sac, Locking, Heavy Duty	4	Night Deposit Pouch, Keyless Security™	7
Currency Bands	12	Non-Locking Light Duty Courier Bag	5
Currency Deposit Bags, Plastic	11	Plastic Currency Deposit Bags	11
Custom Personalization	13	Plastic Seals	10
Data Sac	3	Pull Seals	10
Depository Safe	11	Rifkin Safety Sac®	3
Fast Seals	10	Rolling Supply Bag, Keyless Security™	7
Heavy-Duty Courier Sac, Locking	4	Safe, Depository	11
Imprinting, Silk-Screen	13	Seals	10
Interoffice Courier Pouch, Keyless Security™	7	Seals, Keyless Security™	6
Keying Systems	2	Six-Compartment Coin Bag	8
Keyless Security™ Night Deposit Pouch	7	Stock Bags	4
Keyless Security™ Interoffice Courier Pouch	7	Trans-Sacs®	9
Keyless Security™ Light Duty Courier	7	Twin Windows	13
Keyless Security™ Mini Padlock	10	Windows	13
Keyless Security™ Rolling Supply Bag	7	Zipper Bags	8
Keyless Security™ Seals	6	Color Guide	14
Keys	2	Material Guide	14
Light Duty Courier Bag, Keyless Security™	7	Terms & Policies	15
Light Duty Courier, Non-Locking	5	Zipper Guide	15

Prices effective: February 15, 2011

www.arifkin.com

**VISIT US ONLINE
24 HOURS A DAY!
www.arifkin.com**

ORDERS & INQUIRIES TOLL FREE 800.458.7300 | FAX 800.825.8284 | VISIT OUR WEB SITE AT www.arifkin.com

A RIFKIN Co.
Established 1892

A. Rifkin Co.
1400 Sans Souci Parkway
P.O. Box 878
Wilkes-Barre, PA 18703

PRESORTED
STANDARD
U.S. POSTAGE
PAID
WILKES-BARRE, PA
PERMIT NO. 16